

How... to insert a column into a list box?

Part 2: how to find and modify code?

Requirements

- Installiertes ClassiX® System
- Codewright oder ein anderer Texteditor
- Kenntnisse über:

basic ClassiX® design conventions classes inheritance module	widget action list event message variables	monitor window ObjectListView
--	--	----------------------------------


Task:

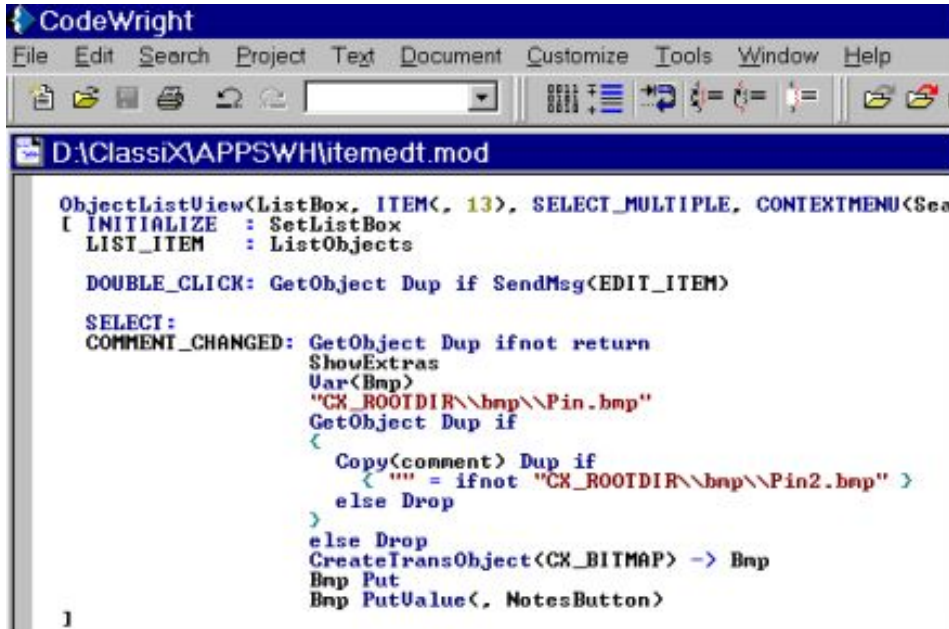
In the last “cooking recipe”, we have learned how inheritance works and in which way it affects our code. Let’s now implement our knowledge!

Content

- Accessing Codewright
- Finding list box definition
- Finding module files
- Modifying module files

Accessing Codewright

To be able to modify the code, we have to “climb the inheritance tree”. We click the button  in the monitor window, which accesses the Codewright editor with the source code of the selected window object. The editor opens the module itemedt.mod, since the code appears here for the first time:




```
CodeWright
File Edit Search Project Text Document Customize Tools Window Help
D:\ClassiX\APPSWH\itemedt.mod
ObjectListView(ListBox, ITEM<, 13>, SELECT_MULTIPLE, CONTEXTMENU(Search
[ INITIALIZE : SetListBox
LIST_ITEM : ListObjects

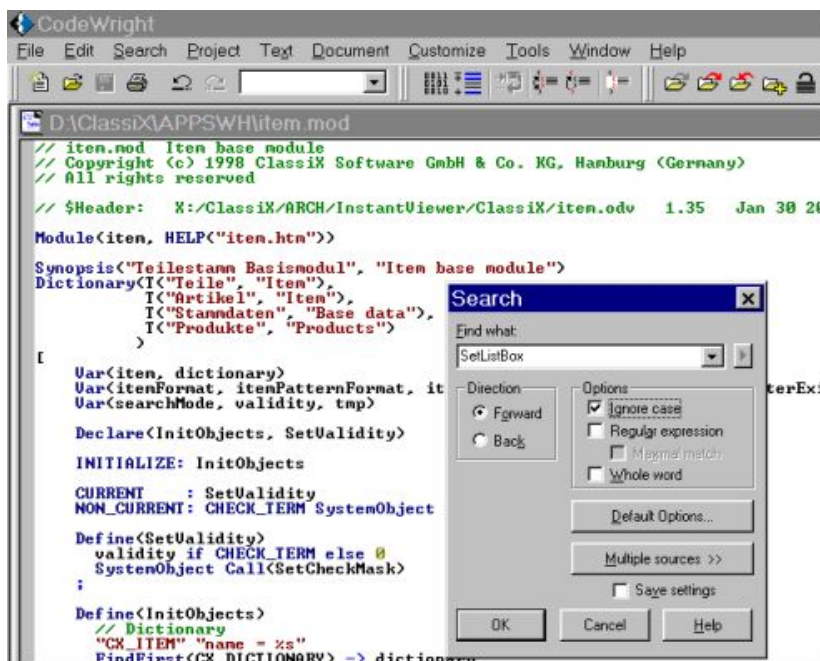
DOUBLE_CLICK: GetObject Dup if SendMsg(EDIT_ITEM)

SELECT:
COMMENT_CHANGED: GetObject Dup ifnot return
ShowExtras
Var<Bmp>
"CX_ROOTDIR\bmp\Pin.bmp"
GetObject Dup if
<
Copy(comment) Dup if
< "" = ifnot "CX_ROOTDIR\bmp\Pin2.bmp" >
else Drop
>
else Drop
CreateTransObject(CX_BITMAP) -> Bmp
Bmp Put
Bmp PutValue<, NotesButton>
```

The list box is accessed here, but the definition is only put into the action list as a message. Our list box is also derived.

Finding the list box definition

To obtain the list box definition, we access Codewright with the source code of the 1st appearance of the window object via button  :



```
CodeWright
File Edit Search Project Text Document Customize Tools Window Help
D:\ClassiX\APPSWH\item.mod
// item.mod Item base module
// Copyright (c) 1998 ClassiX Software GmbH & Co. KG, Hamburg (Germany)
// All rights reserved
// $Header: X:/ClassiX/ARCH/InstantViewer/ClassiX/item.odv 1.35 Jan 30 20
Module(item, HELP("item.htm"))

Synopsis("Teilestamm Basismodul", "Item base module")
Dictionary(T("Teile", "Item"),
T("Artikel", "Item"),
T("Stammdaten", "Base data"),
T("Produkte", "Products")
)

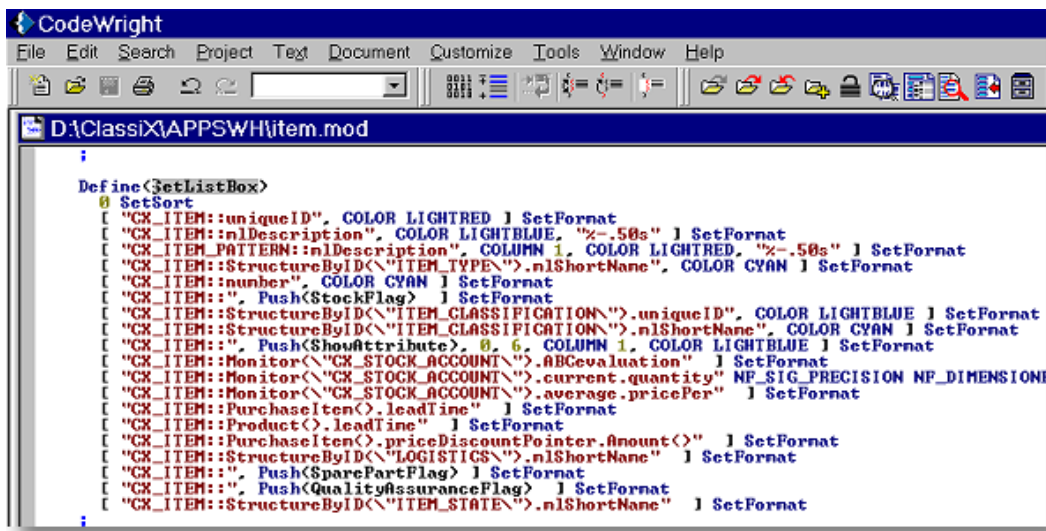
[
Var<item, dictionary>
Var<itemFormat, itemPatternFormat, itemValidity, tmp>
Var<searchMode, validity, tmp>

Declare<InitObjects, SetValidity>
INITIALIZE: InitObjects
CURRENT : SetValidity
NON_CURRENT: CHECK_TERM SystemObject

Define<SetValidity>
validity if CHECK_TERM else 0
SystemObject Call<SetCheckMask>
;

Define<InitObjects>
// Dictionary
"CX_ITEM" "name = %s"
FindFirst(CX_DICTIONARY) -> dictionary
```

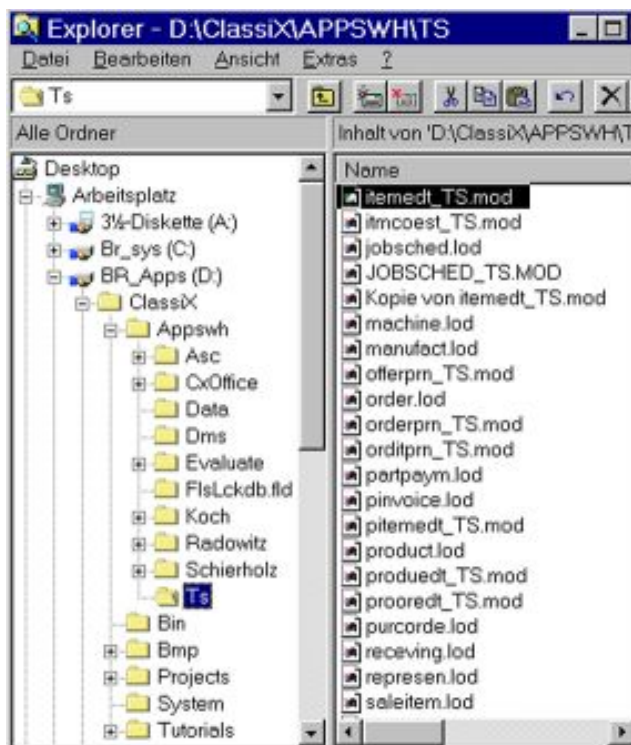
We search for our element definition with search.



```
CodeWright
File Edit Search Project Text Document Customize Tools Window Help
D:\ClassiX\APPSWH\item.mod
;
Define(<SetListBox>
  @ SetSort
  [ "CK_ITEM:uniqueID", COLOR LIGHTRED ] SetFormat
  [ "CK_ITEM:n1Description", COLOR LIGHTBLUE, "%-.50s" ] SetFormat
  [ "CK_ITEM:PATTERN:n1Description", COLUMN 1, COLOR LIGHTRED, "%-.50s" ] SetFormat
  [ "CK_ITEM:StructureByID<"ITEM_TYPE">.n1ShortName", COLOR CYAN ] SetFormat
  [ "CK_ITEM:number", COLOR CYAN ] SetFormat
  [ "CK_ITEM:", Push(StockFlag) ] SetFormat
  [ "CK_ITEM:StructureByID<"ITEM_CLASSIFICATION">.uniqueID", COLOR LIGHTBLUE ] SetFormat
  [ "CK_ITEM:StructureByID<"ITEM_CLASSIFICATION">.n1ShortName", COLOR CYAN ] SetFormat
  [ "CK_ITEM:", Push(ShowAttribute), 0, 6, COLUMN 1, COLOR LIGHTBLUE ] SetFormat
  [ "CK_ITEM:Monitor<"CK_STOCK_ACCOUNT">.ABGevaluation" ] SetFormat
  [ "CK_ITEM:Monitor<"CK_STOCK_ACCOUNT">.current.quantity" NF_SIG_PRECISION NF_DIMENSION ] SetFormat
  [ "CK_ITEM:Monitor<"CK_STOCK_ACCOUNT">.average.pricePer" ] SetFormat
  [ "CK_ITEM:PurchaseItem().leadTime" ] SetFormat
  [ "CK_ITEM:Product().leadTime" ] SetFormat
  [ "CK_ITEM:PurchaseItem().priceDiscountPointer.Amount<" ] SetFormat
  [ "CK_ITEM:StructureByID<"LOGISTICS">.n1ShortName" ] SetFormat
  [ "CK_ITEM:", Push(SparePartFlag) ] SetFormat
  [ "CK_ITEM:", Push(QualityAssuranceFlag) ] SetFormat
  [ "CK_ITEM:StructureByID<"ITEM_STATE">.n1ShortName" ] SetFormat
;
```

Finding the module files

The code, that we are going to change, is – as we can see in the window headline – in the file (drive):\ClassiX\APPSWH\item.mod. It is an AppsWarehouse® module and it **must not be changed by the super user**. So what do we do? Our list box has to be redefined in the individual customer modules, which are located in an APPSWH sub-directory:



In this case, we change the file itemedit_TS.mod according to convention.

