

How... to insert a column into a list box

Part 3 – How to find a data field

Requirements

- ClassiX® system installed
- Codewright or another text editor
- knowledge of:

basic ClassiX® design conventions classes inheritance module	widget action list event message variables	monitor window ObjectListView
--------------------------------------------------------------------------	--------------------------------------------------------	----------------------------------

Task:

In the last “cooking recipe”, we have learned how to find the code for a specific widget. Now, we want to find a specific data field, understand the access mechanics and get to know **the different display options / the possibilities of this construction** .

... und die Möglichkeiten der Darstellung kennenlernen.

Content

- Accessing inspectors
- Which effect has SetFormat in the define?

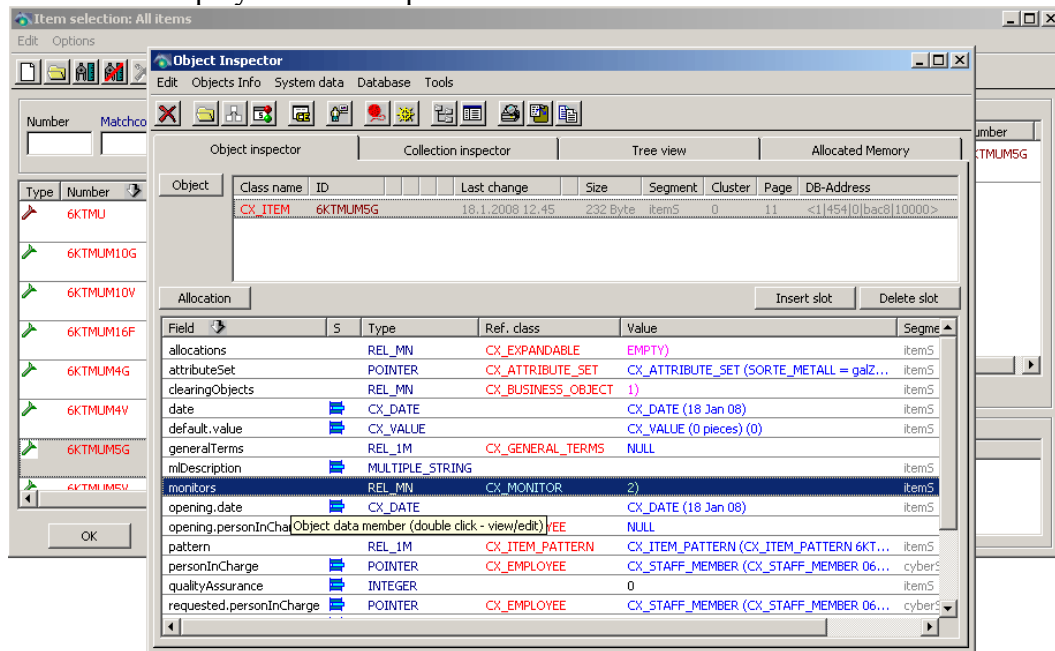
Accessing the “Inspectors”


To find a data field which has not been displayed, yet, we need an “inspector”. An inspector is a tool for displaying the ClassiX® “inner life”. We access this tool via menu item System/Tools/Mini Workbench.

The mini workbench gives us access to the “object inspector” via info/inspectors. The easy way would be to access it with the following button:



After accessing the object inspector, it is possible to select a row in the list box and drag it into the inspector. This row is a simple object – a dataset. The dataset structure is displayed in the inspector window.



The column data field displays the access name,  marks a “slot” (a dynamic object, which gets defined during runtime).

The type defines, if it is a simple data field, which can be accessed directly or if it is a complex data field. INTEGER and STRING are simple data fields. If we want to add the simple data field qualityAssurance to our list box, the following statement has to be inserted into the **Define(SetListBox)** in the module itemedt_TS:

```
[ "CX_ITEM::qualityAssurance", COLOR LIGHTBLUE ] SetFormat
```

The list box modification will be completed after saving the module and closing and re-opening ClassiX®.

Which effect has SetFormat in the define?

Format elements control, which data is displayed by the object list box in which way. **SetFormat** builds a format element for the specified **object box** out of parameters.

The main parameters are:

"KLASSE::ausdr"	class and access expression as a string	compulsory
x	column position (in mini cells)	default x = 0
y	column position (in mini cells)	default y = 0
JUSTIFY_RIGHT	x defines rechte Randposition	
COLOR col	color	default col = BLACK
FONT f	font	default f = 0
"... %s ..."	format string for sprintf	optional

Example:

```
[ "CX_ITEM::uniqueID", COLOR LIGHTRED ] SetFormat
```

uniqueID is the data field, **LIGHTRED** defines the display color and **Setformat** makes uniqueID appear in the list box.

Abstract:

We have learned to search with the object inspector for a directly accessible data field and to display it with SetFormat.

Further information

Part 4 – Complex data types!

Part 5 – List box **cosmetics**

Part 6 – How to find /modify a column head line